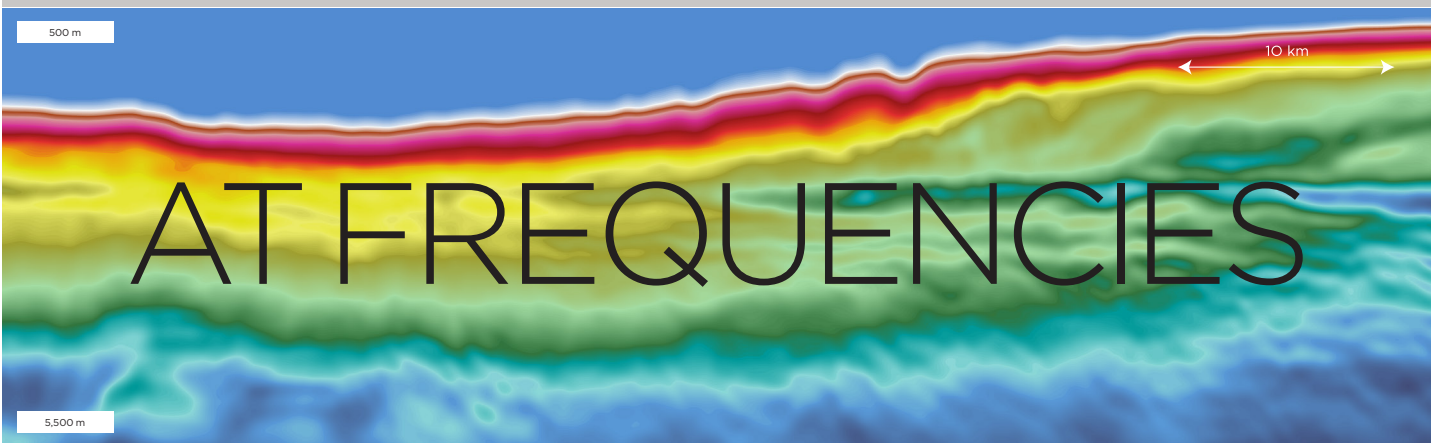


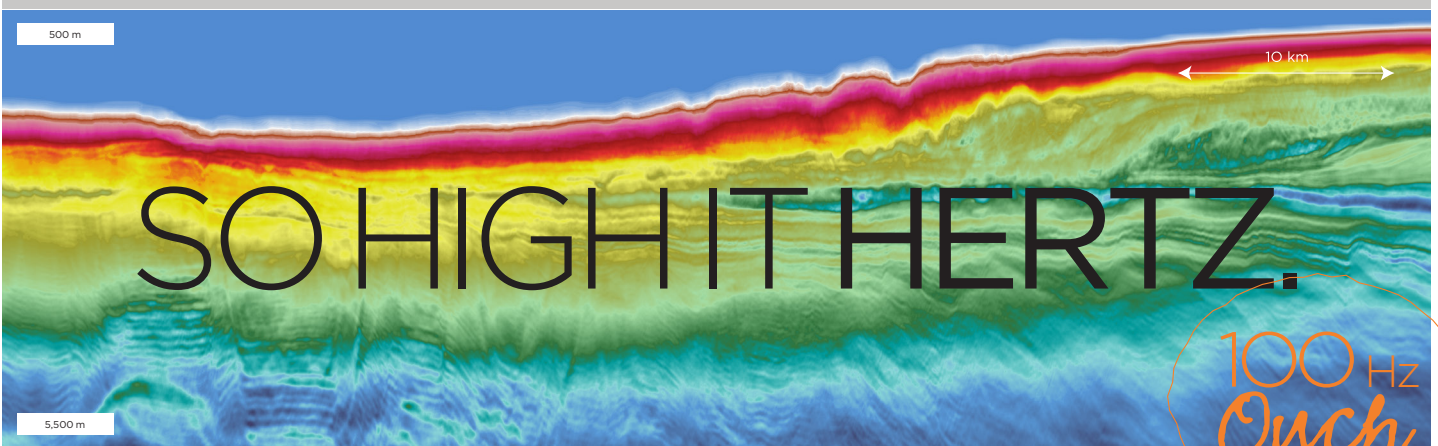
INITIAL MODEL



12 Hz FWI MODEL



100 Hz FWI MODEL



DUG's full waveform inversion (FWI) workflow utilises the entire seismic wavefield to generate refined, high-resolution velocity models for your imaging and characterisation needs. It iteratively updates an initial model by forward modelling synthetics and comparing them to field data. [www.dug.com](http://www.dug.com)



# Table of Contents

## Special Section: Advancements in image processing

- 410.....Introduction to this special section: Advancements in image processing, Q. Zhao and N. Saxena
- 412.....Generation of ground truth images to validate micro-CT image-processing pipelines, S. Berg, N. Saxena, M. Shaik, and C. Pradhan
- 421 .....Predicting elastic properties and permeability of rocks from 2D thin sections, N. Srisutthiyakorn, S. Hunter, R. Sarker, R. Hofmann, and I. Espejo
- 428.....Integrating grain-scale geology in digital rock physics, S. Hunter, R. Hofmann, and I. Espejo
- 435.....Machine-learning-based object detection in images for reservoir characterization: A case study of fracture detection in shales, X. Tian and H. Daigle
- 443.....Multiresolution analysis and learning for computational seismic interpretation, M. Alfarraj, Y. Alaudah, Z. Long, and G. AlRegib
- 451.....Successful leveraging of image processing and machine learning in seismic structural interpretation: A review, Z. Wang, H. Di, M. A. Shafiq, Y. Alaudah, and G. AlRegib
- 462.....In situ chemical oxidation processes: 4D quantitative visualization of byproduct formation and deposition via micro-CT imaging, G. C. Kalogerakis, Q. Zhao, G. Grasselli, and B. E. Sleep

---

468.....Geophysical Tutorial: Time-frequency decomposition, M. Hall

471a1..... \*A comparison of random and periodic marine simultaneous-source encoding, D. F. Halliday and I. Moore

\*The abstract and one figure from this article appear in the printed edition. The full article can be found in the SEG Digital Library (<https://library.seg.org/toc/leedff/37/6>) and in *TLE's* Digital Edition (<http://www.tleonline.org>).

---

## Departments

- 406..... Editorial Calendar
- 408..... President's Page
- 472..... Bright Spots
- 474..... Reviews
- 475..... Board Report
- 476..... Membership
- 478..... Memorial
- 478..... Transitions
- 479..... Meetings Calendar
- 480..... Interpreter Sam

---

Cover image by Maria Gee, using images from Hunter et al. and Srisutthiyakorn et al.