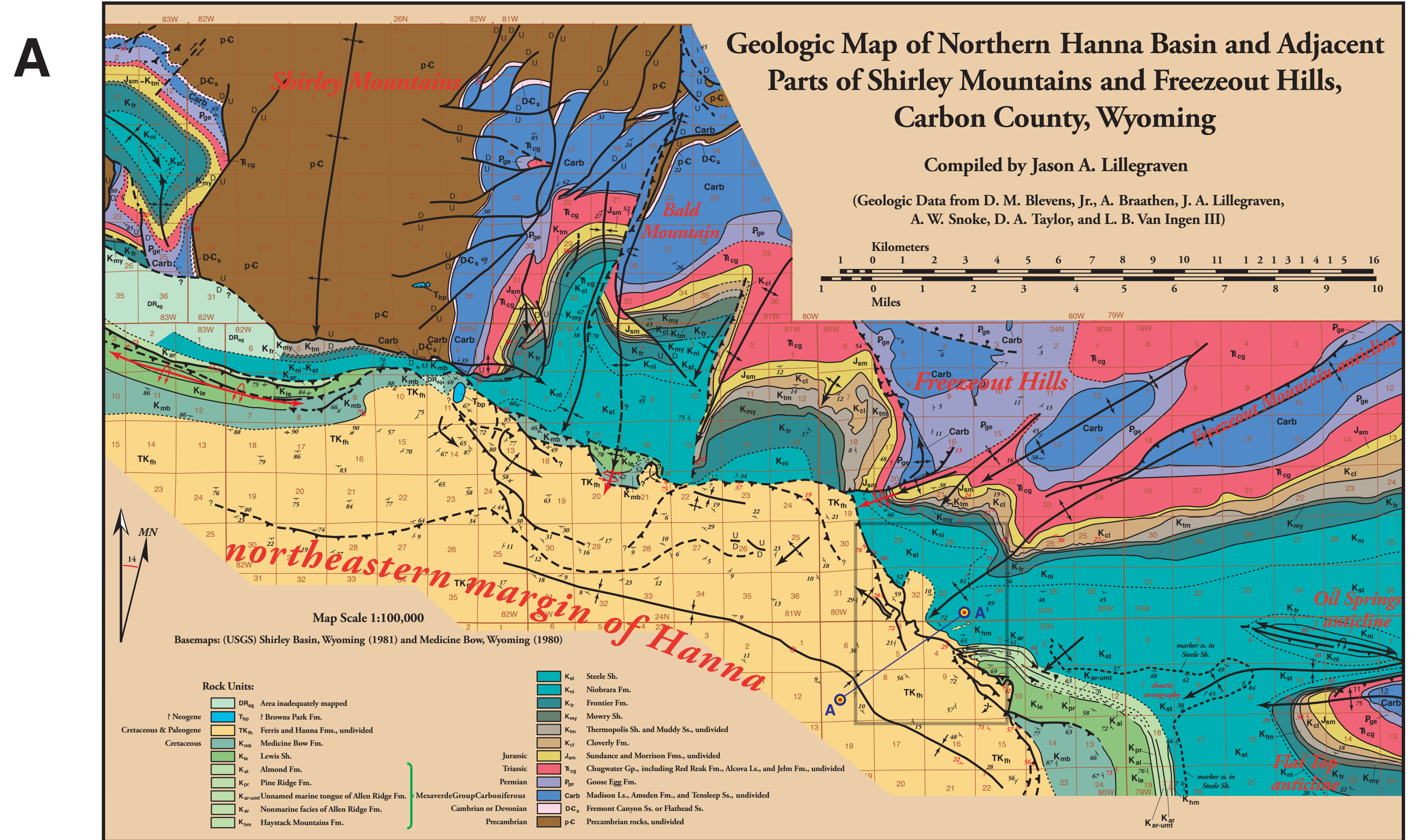


Figure 4. Geology in Vicinity of "The Breaks," Northeastern Corner of Hanna Basin, Carbon County, Wyoming

Jason A. Lillegraven, Arthur W. Snoke, and Malcolm C. McKenna

2004

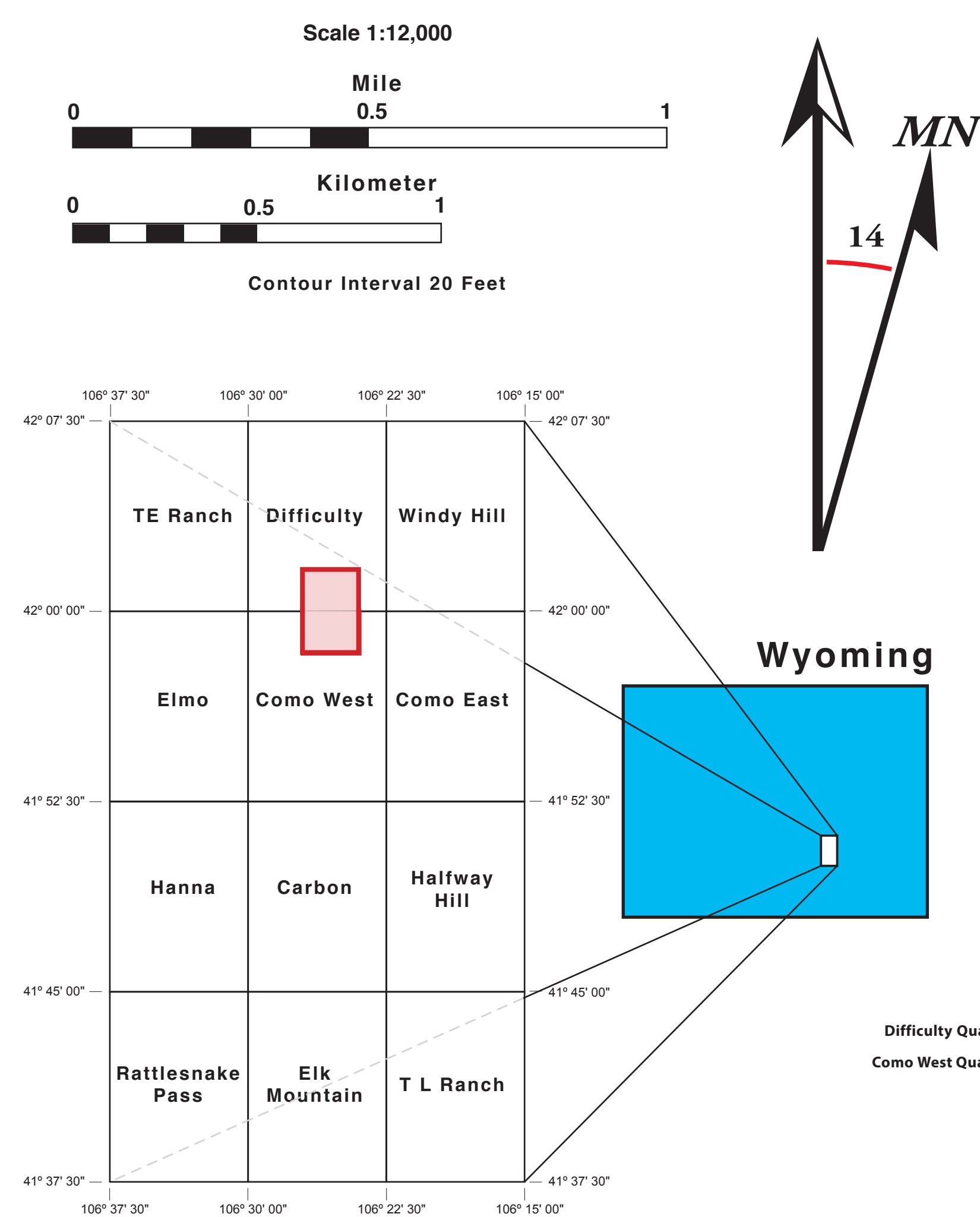


Geologic Symbols:

- Stratigraphic contact, dashed where approximate
- Horizontal bedding
- Strike and dip of bedding
- Strike and dip of vertical bedding
- Strike and dip of overturned bedding
- Trace of plunging anticline
- Trace of plunging syncline
- Trace of plunging synformal anticline
- Trace of overturned plunging anticline
- High-angle fault, dashed where approximate, relative sense-of-displacement indicated
- Thrust fault, dashed where approximate
- Approximate stratigraphic level on measured section for numbered coal bed from Dobbin et al., 1929

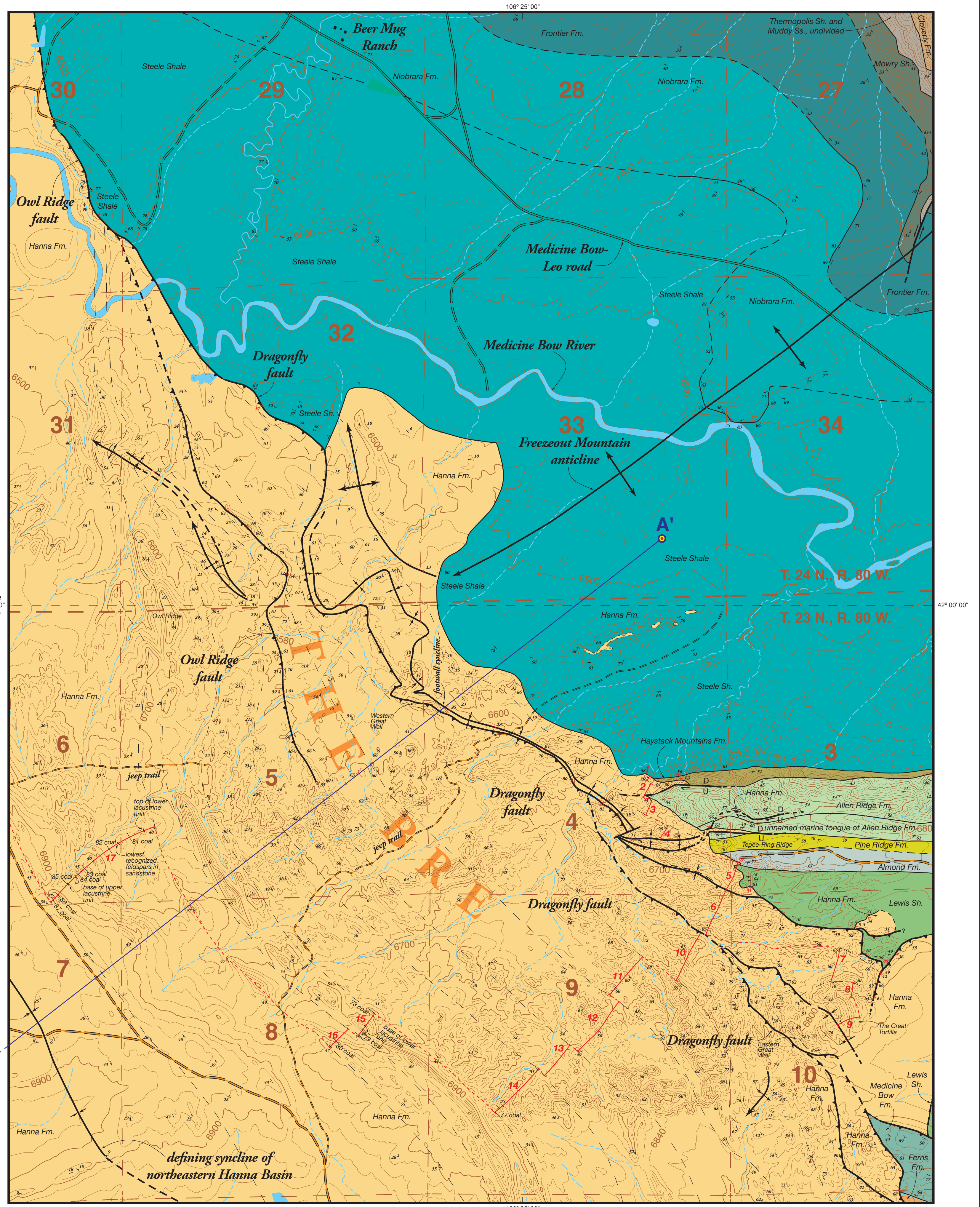
Numbered leg of measured section

B



Basemaps (USGS 7.5 minute topographic quadrangles):
Como West (photorevised 1982) and Difficulty (photorevised 1984)

- #### Rock Units:
- | | | |
|------------------------------|--|-----------------|
| Paleocene & lowermost Eocene | Hanna Fm. | |
| Cretaceous & Paleocene | Ferris Fm. | |
| | Medicine Bow Fm. | |
| | Lewis Sh. | |
| | Almond Fm. | |
| | Pine Ridge Fm. | |
| | Unnamed marine tongue of Allen Ridge Fm. | Mesaverde Group |
| | Nonmarine facies of Allen Ridge Fm. | |
| Cretaceous | Haystack Mountains Fm. | |
| | Steele Sh. | |
| | Niobrara Fm. | |
| | Frontier Fm. | |
| | Mowry Sh. | |
| | Thermopolis Sh. and Muddy Ss., undivided | |
| | Clovely Fm. | |



C

