

To view Figure 5's annotation layer in the PDF version of this paper, open the PDF in Adobe Acrobat or Adobe Reader. To view the layer while reading the full-text version of the paper, click <http://doi.org/10.1130/GES02089.f5> to download a PDF of the figure.

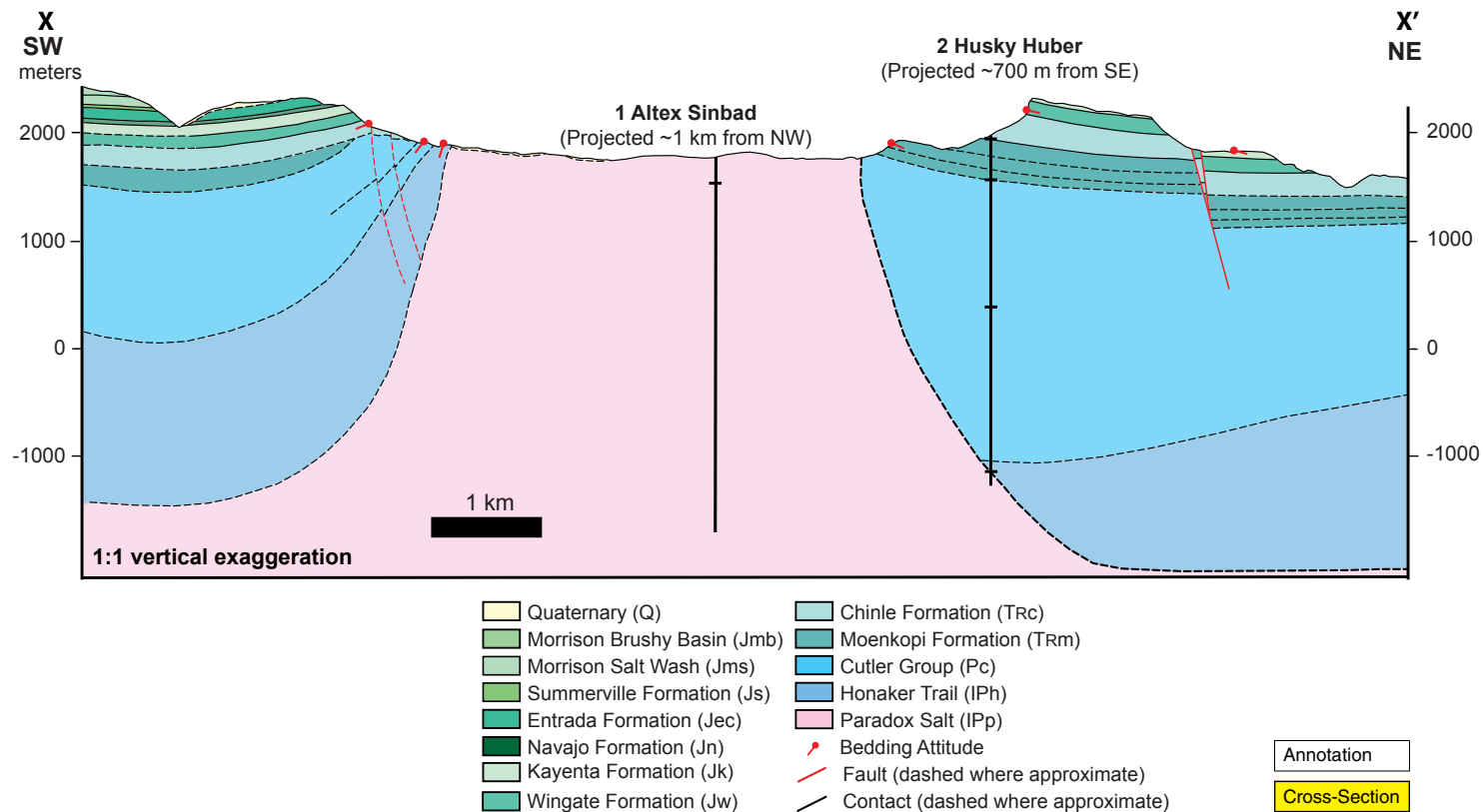


Figure 5. Generalized cross-section of Sinbad Valley integrating previous and new field mapping, and well log (1 Altex Sinbad and 2 Husky Huber) and 2-D seismic reflection data interpretation (cross-section modified after Shoemaker, 1955; Maret and Coe, 1960). Location shown in Figures 1B and 4. TD—total depth. To view Figure 5's annotation layer in the PDF version of this paper, open the PDF in Adobe Acrobat or Adobe Reader. To view the layer while reading the full-text version of the paper, click <http://doi.org/10.1130/GES02089.f5> to download a PDF of the figure.